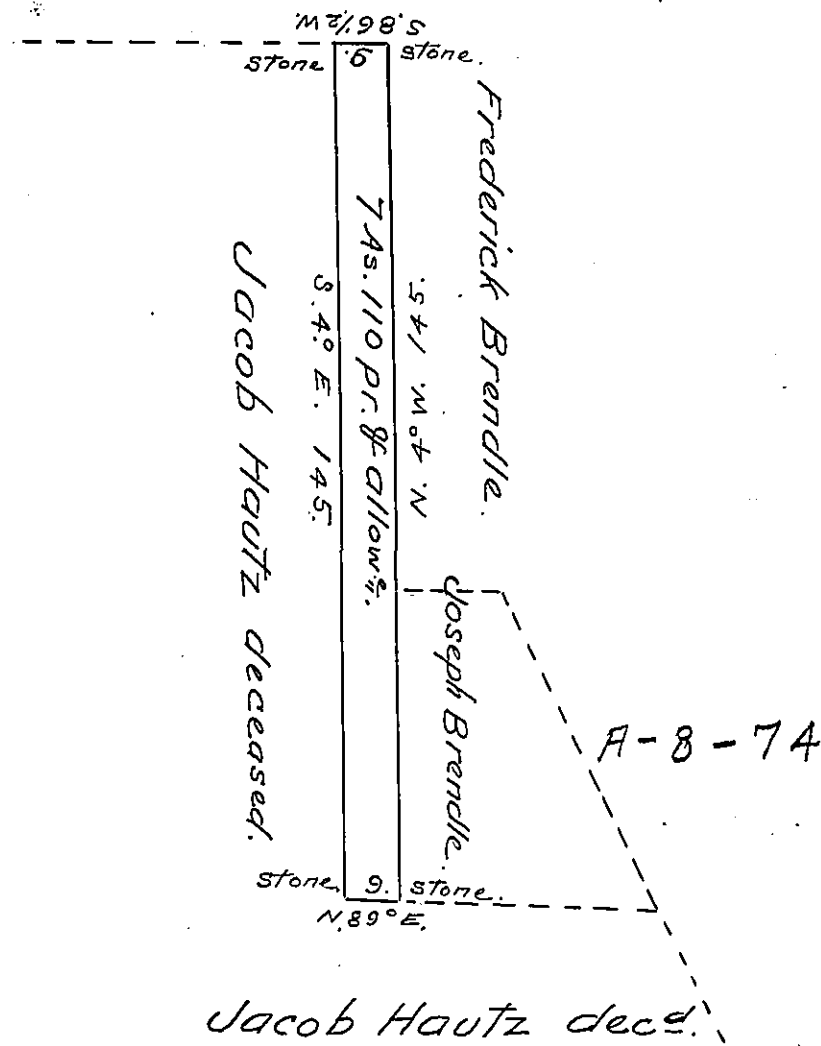


Edward Wolf.



Draft of a tract of land situate in Bethel -  
 Township, in the County of Berks, containing sev-  
 en acres, one hundred and ten perches, and al-  
 lowance of six percent. for roads &c. Surveyed  
 for the Nineteenth day of June A.D. 1868  
~~being part of a large tract of acres per-~~  
~~ches, and allowance, originally surveyed in pursu-~~  
 ance of a warrant granted to Jacob W. Grove,  
 executor of Jacob Hantz <sup>decd</sup> dated the 28<sup>th</sup> day of  
 January 1868.

Per Daniel S. Zacharias

To the Hon. J. M. Campbell

C. S.

Surveyor General.

IN TESTIMONY that the above is a copy of the original remaining on file in  
 the Department of Internal Affairs of Pennsylvania, made  
 conformably to an Act of Assembly approved the 16th day of  
 February, 1833, I have hereunto set my Hand and caused  
 the Seal of said Department to be affixed at Harrisburg,  
 this twentieth day of January 1905.

*George W. Brown*  
 Secretary of Internal Affairs.